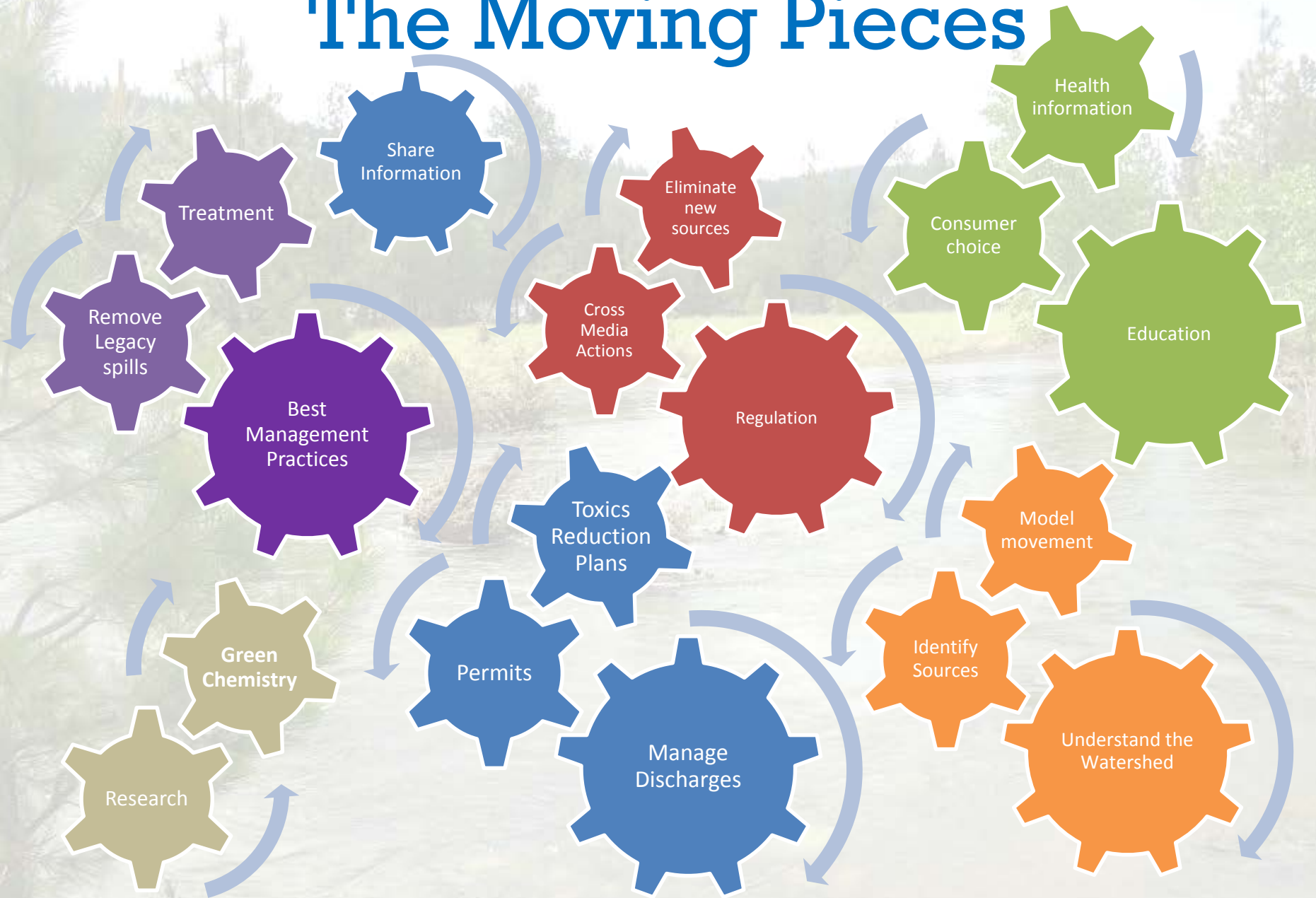




Spokane River Regional Toxics Task Force

*Members of the community,
stewards of the river*

The Moving Pieces





Who We Are



DEPARTMENT OF
ECOLOGY
State of Washington



KAISER
ALUMINUM



SPOKANE COUNTY



Spokane
RIVERKEEPER®



Our Vision

We will work collaboratively to characterize the sources of toxics in the Spokane River and identify and implement appropriate actions needed to make measurable progress towards meeting applicable water quality standards for the State of Washington, State of Idaho, and The Spokane Tribe of Indians.



Task Force Goal

- MOA-stated goal:
 - “to develop a comprehensive plan to *bring the Spokane River into compliance with applicable water quality standards for PCBs.*”
- Plan due 12/31/16



Structure & Role

- No legal authority, yet legally-mandated
- Participants = technical- & policy-level staff
- Open meetings



Activities (*from MOA*)

- Provide a forum for review & discussion of Spokane River toxics issues.
- Public outreach to advance understanding of those issues
- Consider past & future studies & implementation actions, including those of individual dischargers.
- Consider technical studies understand sources of toxics & advance region-wide understanding of toxics in the River.
- Provide specific recommendations for the development of a Spokane River toxics reduction plan.
- *ADDED: Individual member entity toxics reduction actions*



What Works Well?

- MOA
- Community-based / shared core value
- Openness, flexibility
- Professional respect & focus on solutions
- Diversity of Task Force composition
- Neutral facilitator



What Doesn't Work So Well?

- No full-time staff
- Tendency to go down rabbit trails
- Collaboration can be messy
- Regulatory/legal framework creates polarizing dynamic

Principles of Collaboration

- Purpose-driven
- Inclusive, Not Exclusive
- Educational
- Voluntary
- Self-Designed
- Flexible
- Egalitarian
- Respectful
- Accountable
- Time Limited
- Achievable





Questions?

Toxics Task Force
www.srtrtf.org