

Present Land Uses & Flooding

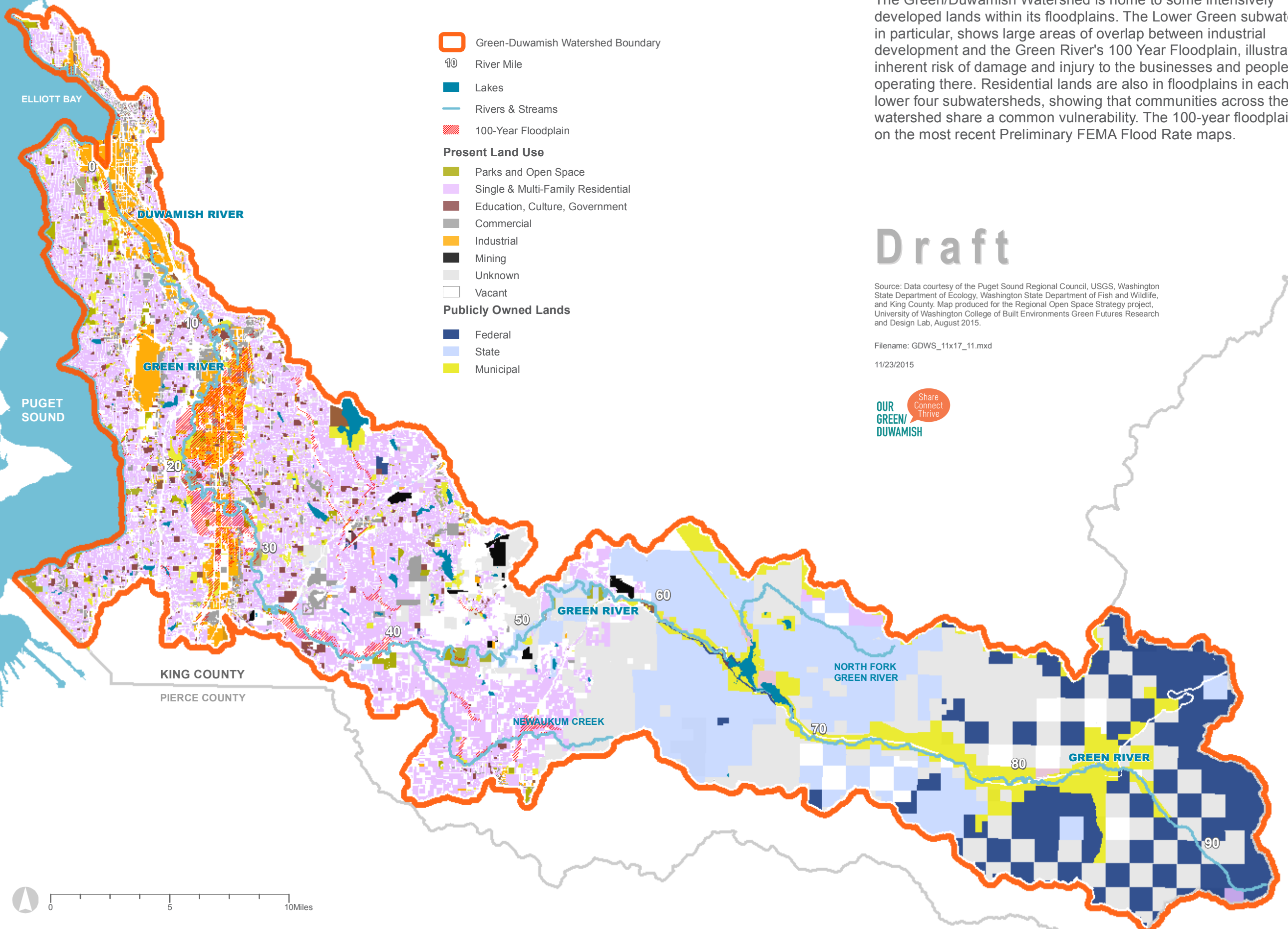
The Green/Duwamish Watershed is home to some intensively developed lands within its floodplains. The Lower Green subwatershed, in particular, shows large areas of overlap between industrial development and the Green River's 100 Year Floodplain, illustrating an inherent risk of damage and injury to the businesses and people operating there. Residential lands are also in floodplains in each of the lower four subwatersheds, showing that communities across the watershed share a common vulnerability. The 100-year floodplain is based on the most recent Preliminary FEMA Flood Rate maps.

Draft

Source: Data courtesy of the Puget Sound Regional Council, USGS, Washington State Department of Ecology, Washington State Department of Fish and Wildlife, and King County. Map produced for the Regional Open Space Strategy project, University of Washington College of Built Environments Green Futures Research and Design Lab, August 2015.

Filename: GDWS_11x17_11.mxd

11/23/2015



- Green-Duwamish Watershed Boundary
 - 10 River Mile
 - Lakes
 - Rivers & Streams
 - 100-Year Floodplain
- Present Land Use**
- Parks and Open Space
 - Single & Multi-Family Residential
 - Education, Culture, Government
 - Commercial
 - Industrial
 - Mining
 - Unknown
 - Vacant
- Publicly Owned Lands**
- Federal
 - State
 - Municipal

